

Apartment 5 Block A City Gate, Connolly Street, Sligo, Co. Sligo, F91 DHE3, Ireland,

Residential |

Sold | €135,000



Spacious two-bedroom first floor apartment with dual aspect in an ideal location close to all amenities. The property includes a parking space in the secure underground basement carpark.

This is a very spacious two bedroom first floor apartment with main bedroom ensuite. The apartment has the benefit of dual aspect with balconies to the front and to the rear.

The spacious kitchen/dining/living area has its own private balcony area and the master bedroom, which is ensuite, also has a private south-facing balcony overlooking the courtyard to the rear.

Location

City Gate is located on Mail Coach Road all of the amenities of Sligo town are on the doorstep. Coach Road close to Sligo town centre. Shops, schools etc. are all very close by and the underground car park is also an ideal asset for this location.

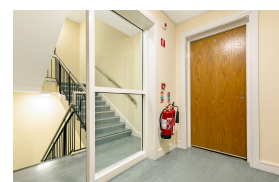
Size:

69.32 sqM - 746 sqFtSqM

Entrance Hall

Array

Carpet. Hot press off. 6.95sqm (74.80sqft)



Kitchen/Dining/Living Area

6.20m x 6.10m (20.34ft x 20.01ft)

Tiled floor in Kitchen area. Fitted kitchen with dishwasher, washing machine, fridge freezer, oven & hob. Lino floor in Dining area & carpet in living area. Extensive glazing & access to private balcony.



Bathroom

2.30m x 1.80m (7.55ft x 5.91ft)

Tiled floor. WC, WHB & Bath with tiled surround.



Bedroom 1

2.30m x 5.70m (7.55ft x 18.70ft)

Carpet.

Bedroom 2

3.70m x 2.60m (12.14ft x 8.53ft)

Carpet. En-Suite off. Access to private south facing balcony.



En-suite

1.60m x 1.70m (5.25ft x 5.58ft)

WC, WHB & fully tiled shower enclosure.

Garden

This property has the benefit of a parking space in the secure underground basement carpark. There are also parking spaces on the street outside the apartments.

Directions

In Sligo take the Mail Coach Road out of town and City Gate is on the left hand side. F91 DHE3

