

18 Meadow Brook, Tubbercurry, Co. Sligo, F91 T6Y2, Ireland,

Residential |

For Sale | €190,000



Spacious 4 bedroom semi-detached property located in a popular residential development. This property is presented in very good condition throughout & viewings are highly recommended.

This is a well presented four bedroom semi-detached home. There is spacious living accommodation at ground floor including a guest WC. At first floor there are four good size bedrooms, with the master bedroom en suite.

The property has the benefit of Oil Fired Central Heating and double glazed uPVC windows throughout.

Location

This property is located within a 5-minute walk from the village of Tubbercurry. Tubbercurry is a popular village approx. 35km from Sligo town centre. Amenities in Tubbercurry include national school, secondary school, supermarket, bars, hotel etc.

Size:

111.58 sqM - 1201 sqFtSqM

Entrance Hall

Array

Tiled floor. Carpeted stairs to first floor.

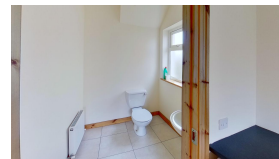
11.20sqm (120.55sqft)



Living Room

4.04m x 4.80m (13.25ft x 15.75ft)

Laminate wood floor. Fireplace with stove. Bay window.



Kitchen/Dining Room

4.51m x 3.87m (14.80ft x 12.70ft)

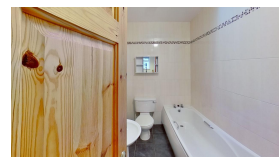
Tiled floor. Fitted kitchen with tiled splash back.



Utility Room

1.65m x 2.66m (5.41ft x 8.73ft)

Tiled floor. Plumbed for washing machine & dryer. Door to rear garden.



Guest WC

1.63m x 1.57m (5.35ft x 5.15ft)

Tiled floor. WC & WHB.

Landing

Array

Carpet. Hot press off. 8.43sqm (90.73sqm)

Bedroom 1

3.65m x 3.67m (11.98ft x 12.04ft)

Carpet. Built-in wardrobes. En-Suite off.

En-suite

Array

Tiled floor. WC, WHB & Shower.

Bedroom 2

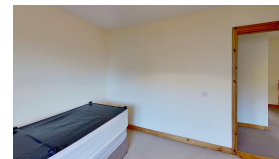
2.98m x 3.78m (9.78ft x 12.40ft)

Carpet.

Bedroom 3

2.78m x 2.98m (9.12ft x 9.78ft)

Carpet.



Bedroom 4

2.50m x 2.60m (8.20ft x 8.53ft)

Carpet. Wardrobe.



Bathroom

2.56m x 1.55m (8.40ft x 5.09ft)

Tiled floor & tiled walls. WC, WHB & Bath. Sky light.

Garden

Open plan front garden with driveway.

Enclosed rear garden.

Directions

Take the N17 road from Sligo to Tubbercurry,
turn left onto Mountain Road continue for
600m turn left into Meadow Brook. Eircode:
F91 T6Y2